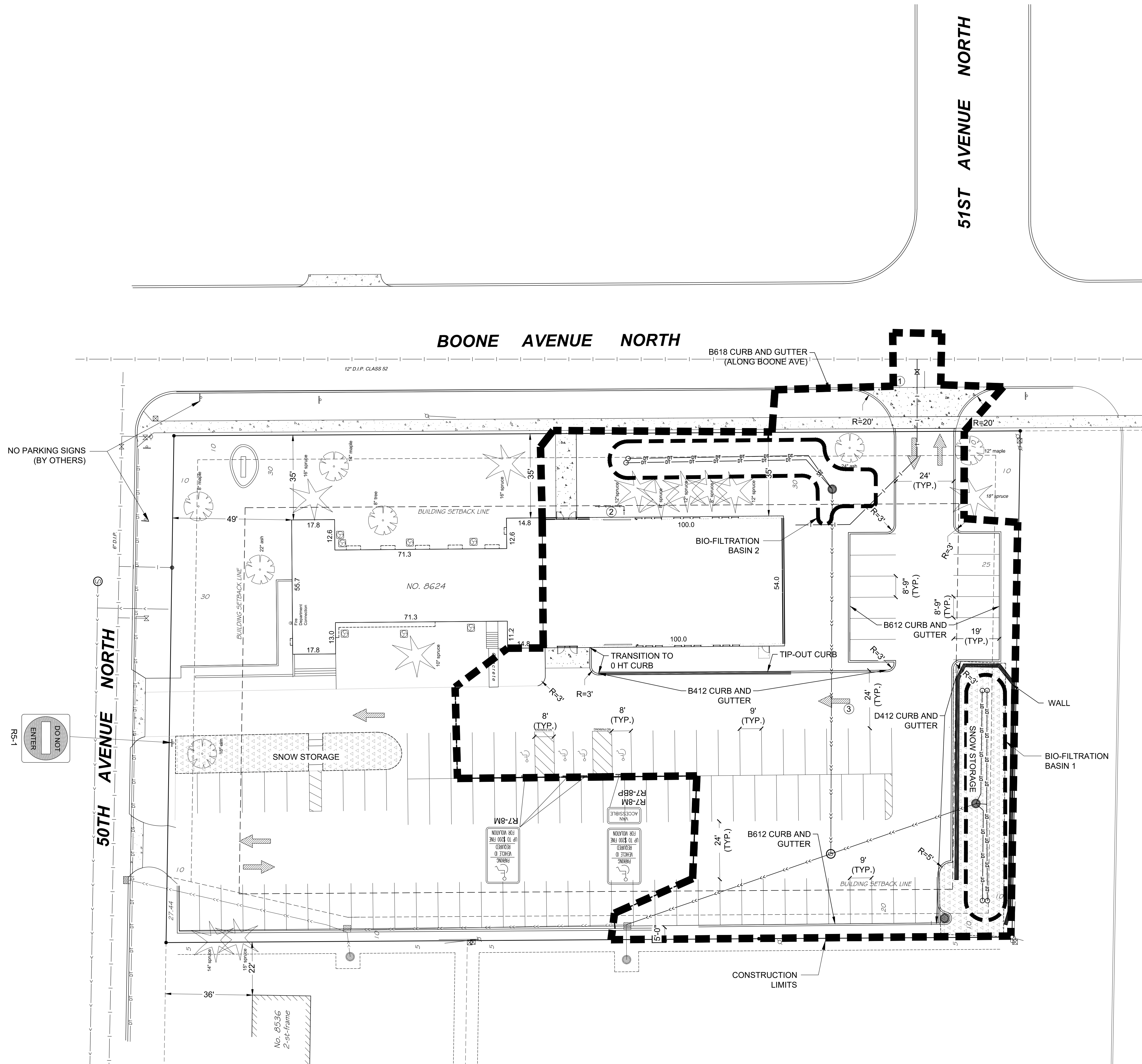


No.	Description	Date
1	City Review #1	01.27.17
2	Water Connection	03.03.17



- REFERENCE NOTES:
- CONSTRUCT DRIVEWAY ENTRANCE AND SIDEWALK PER CITY STANDARD PLATES STR-1, STR-8, AND STR-30 ON SHEET C005.
  - SEE ARCHITECTURAL PLANS FOR MECHANICAL AREA SCREENING LOCATION AND TYPE.
  - PROVIDE PAVEMENT ARROW MARKING. PAVEMENT MARKING SHALL MEET THE REQUIREMENTS OF THE LATEST EDITION OF THE MN MUTCD.

- GENERAL NOTES:
- VERIFY BUILDING DIMENSIONS WITH ARCHITECTURAL PLANS.
  - MAINTAIN EXISTING GARBAGE OPERATION WITH A SINGLE RESIDENTIAL CONTAINER.
  - ALL BITUMINOUS PAVEMENT SHALL BE CONSTRUCTED PER 1  
C002.
  - ALL CONCRETE SIDEWALKS SHALL BE CONSTRUCTED PER 2  
C002.
  - PROVIDE NEW STRIPING ON EXISTING PARKING AREA.

1.5" TYPE SP 9.5 WEARING COURSE MIXTURE (SPWEA240B)  
2" TYPE SP 12.5 NON WEARING COURSE MIXTURE (SPNWB230B)  
6" CLASS 5 AGGREGATE BASE  
PLACED ON APPROVED SUBGRADE

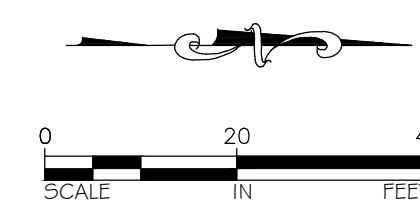
4" CONCRETE PAVEMENT  
4" GRANULAR BASE

1  
C002 PARKING LOT SECTION  
NOT TO SCALE

2  
C002 CONCRETE WALKWAY / APRON  
NOT TO SCALE

NOTE: USE TACK COAT BETWEEN ALL BITUMINOUS MIXTURES. THE BITUMINOUS TACK COAT MATERIAL SHALL BE APPLIED AT A UNIFORM RATE OF 0.05 GAL/SY - 0.07 GAL/SY BETWEEN BITUMINOUS COURSES. THE APPLICATION RATES ARE FOR UNDILUTED EMULSIONS (AS SUPPLIED FROM THE REFINERY) OR MC AND RC LIQUID ASPHALTS.

NOTE: SIDEWALK CROSS SLOPES SHALL NOT EXCEED 2%. ANY SIDEWALK EXCEEDING 2% SHALL BE REMOVED AND REPLACED AT THE CONTRACTOR'S EXPENSE.



LOT COVERAGE  
BUILDING = 12.66%  
ASPHALT = 51.70%  
GREEN AREA = 35.64%  
PERCENTAGE = 100.0%

SNOW STORAGE = 10% OF ASPHALT AREA

I hereby certify that this plan, specification, or report was prepared by me or under my direct supervision and that I am a duly Licensed Professional Engineer under the laws of the State of Minnesota.

Dated this 12th day of January, 2017.

Signed \_\_\_\_\_  
Jeffrey A. Prasch, Minn. Reg. No. 52706

NORTHWEST CHURCH OF CHRIST  
**NW CHURCH OF CHRIST**  
8624 50TH AVENUE NORTH NEW HOPE, MN 55428

DATE  
01.12.17

PHASE  
DESIGN  
DEVELOPMENT

PROJECT  
JLG 15143

SHEET

**C002**  
SITE PLAN